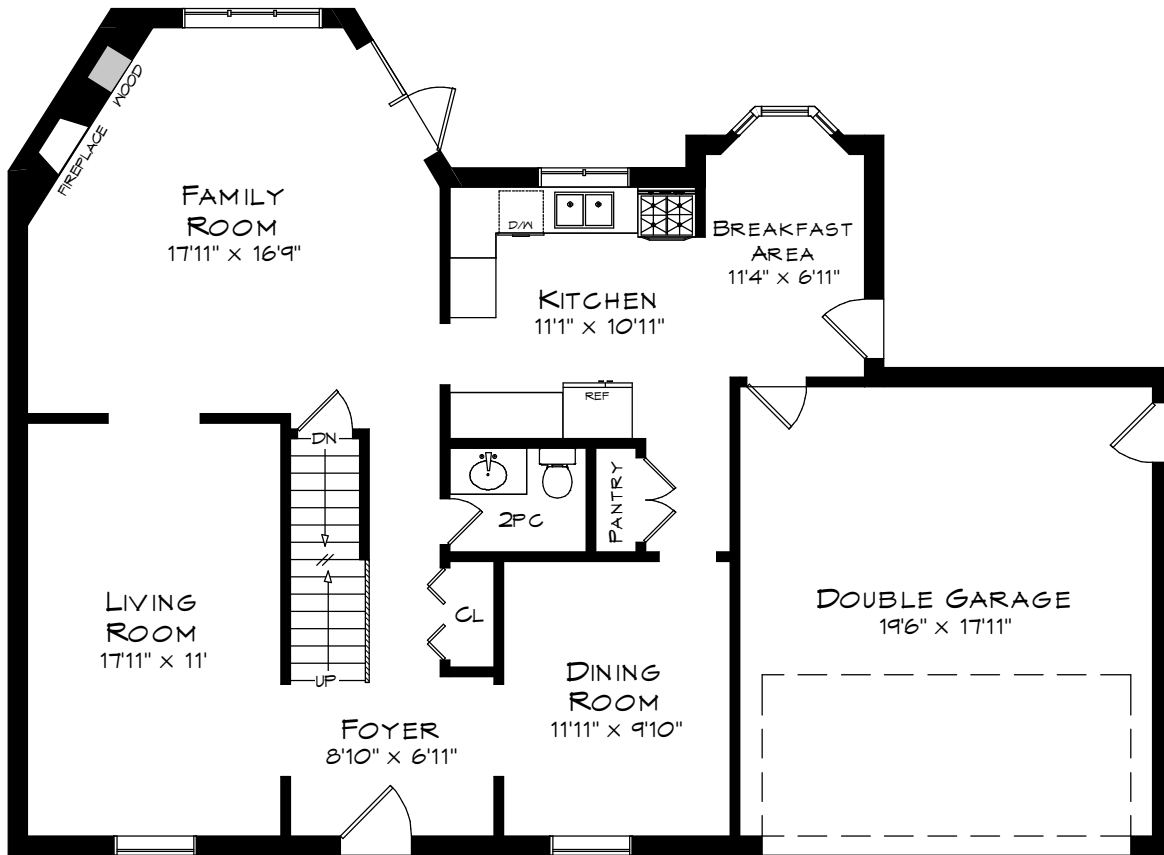
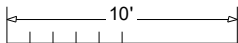


206 ROSSMORE BLVD

TOTAL SQUARE FOOTAGE
3,163 SQ.FT.

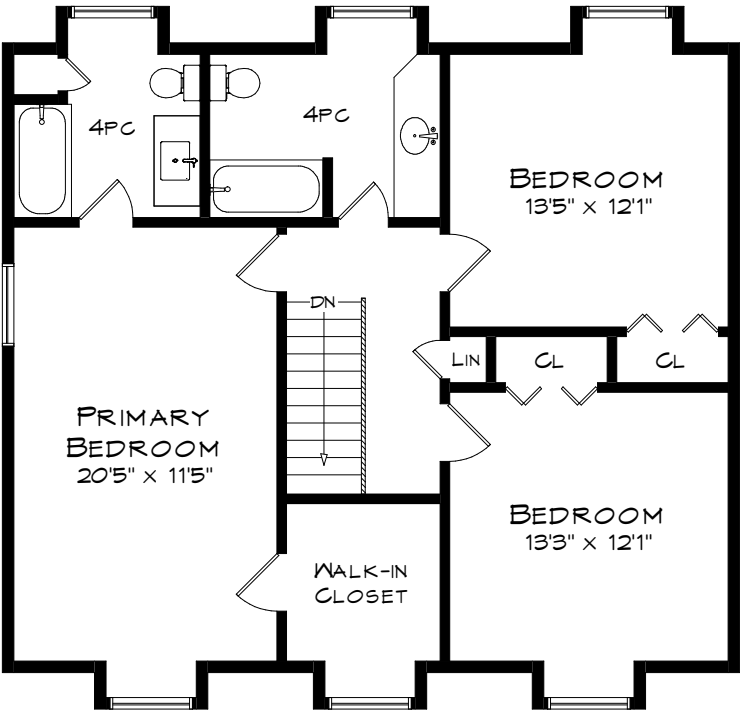


MAIN LEVEL
1,127 SQUARE FEET
+ 393 SF (GARAGE)

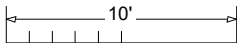


Measurements may not be 100% accurate
and should be used as a guideline only.
September - 2025

206 ROSSMORE BLVD

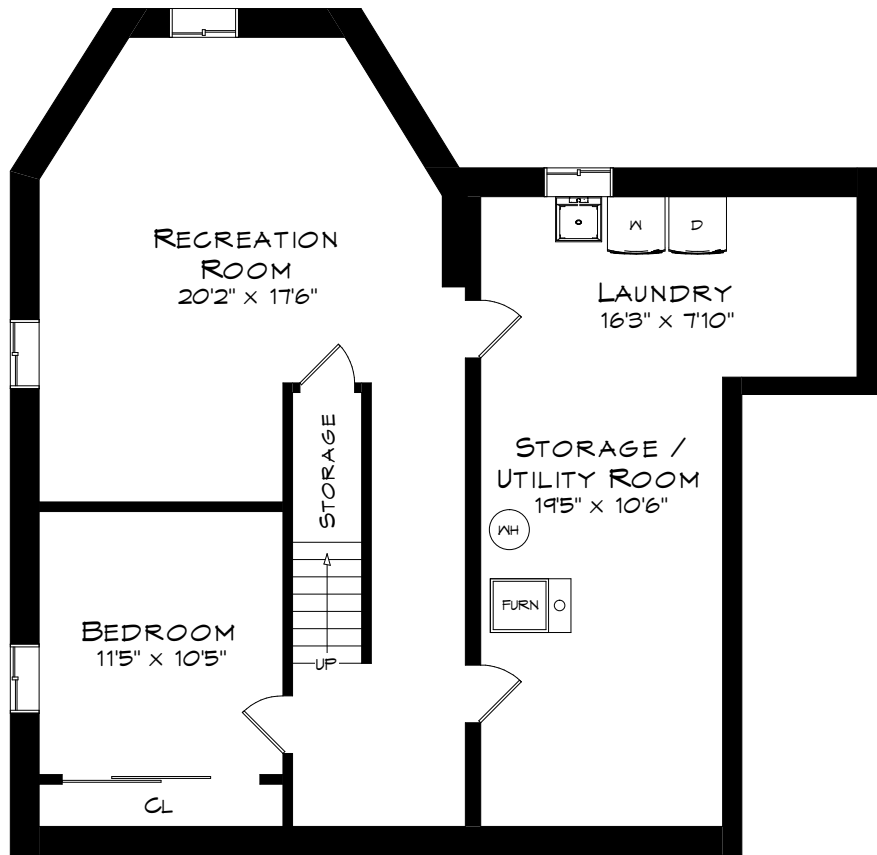


UPPER LEVEL
921 SQUARE FEET

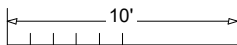


Measurements may not be 100% accurate
and should be used as a guideline only.
September - 2025

206 ROSSMORE BLVD



LOWER LEVEL
1,115 SQUARE FEET



Measurements may not be 100% accurate
and should be used as a guideline only.
September - 2025